

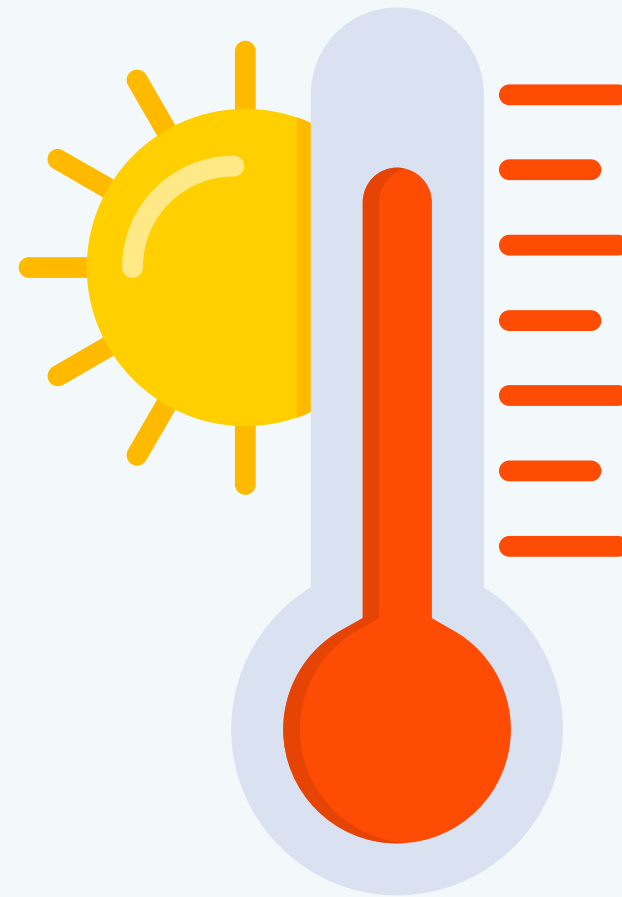
IS STAGIONIS





ISTADI

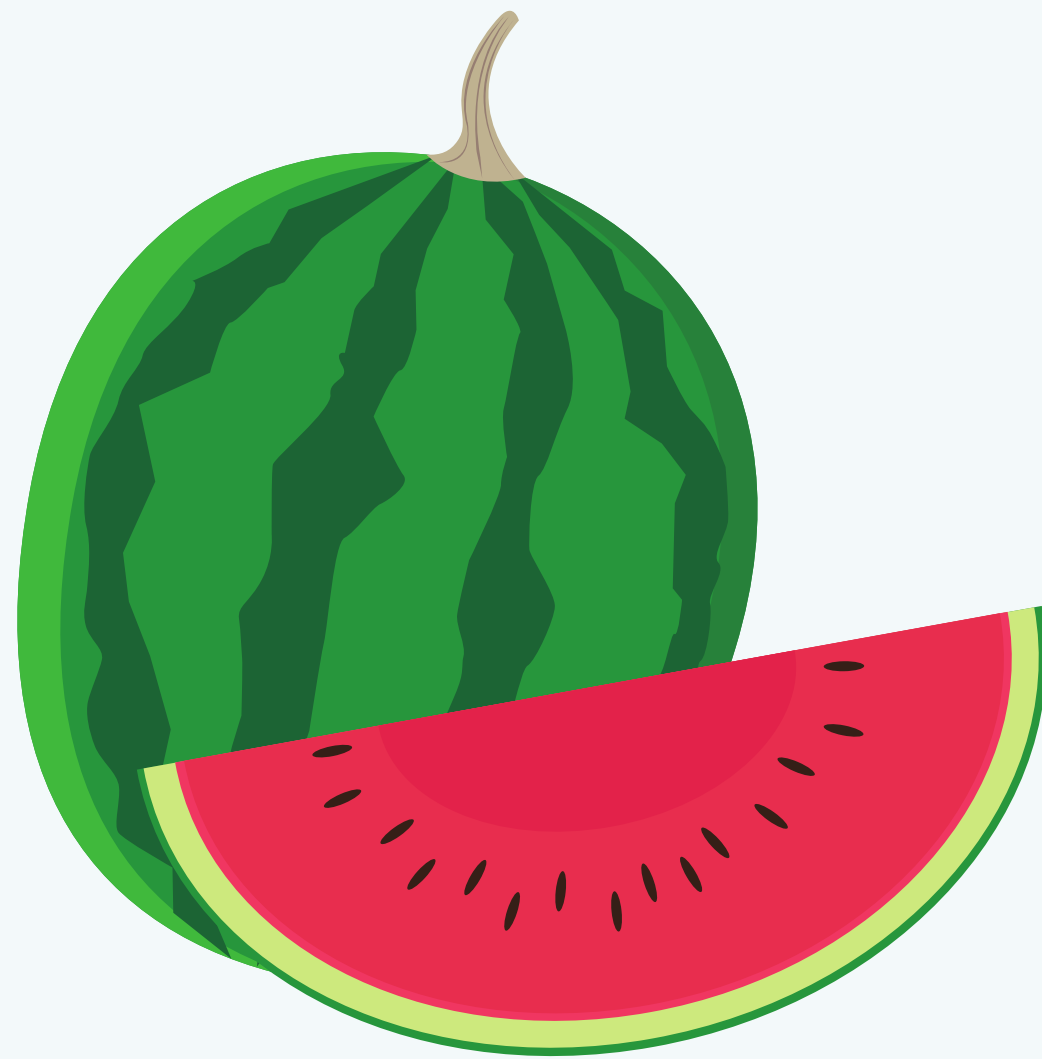
In s'istadi ddoi at basca meda
e su soli est luxenti



In s'istadi est bellu andai a mari a nadai



In s'istadi podis papai sa s'indria





ATÒNGIU

In s'atòngiu inghitzat a fai prus frius
e is follas ndi arruint de is matas.



In s'atòngiu est bellu andai a giru me in is
montis o in campègiu.



In s'atògiu podis giogai cun is follas.





IERRU

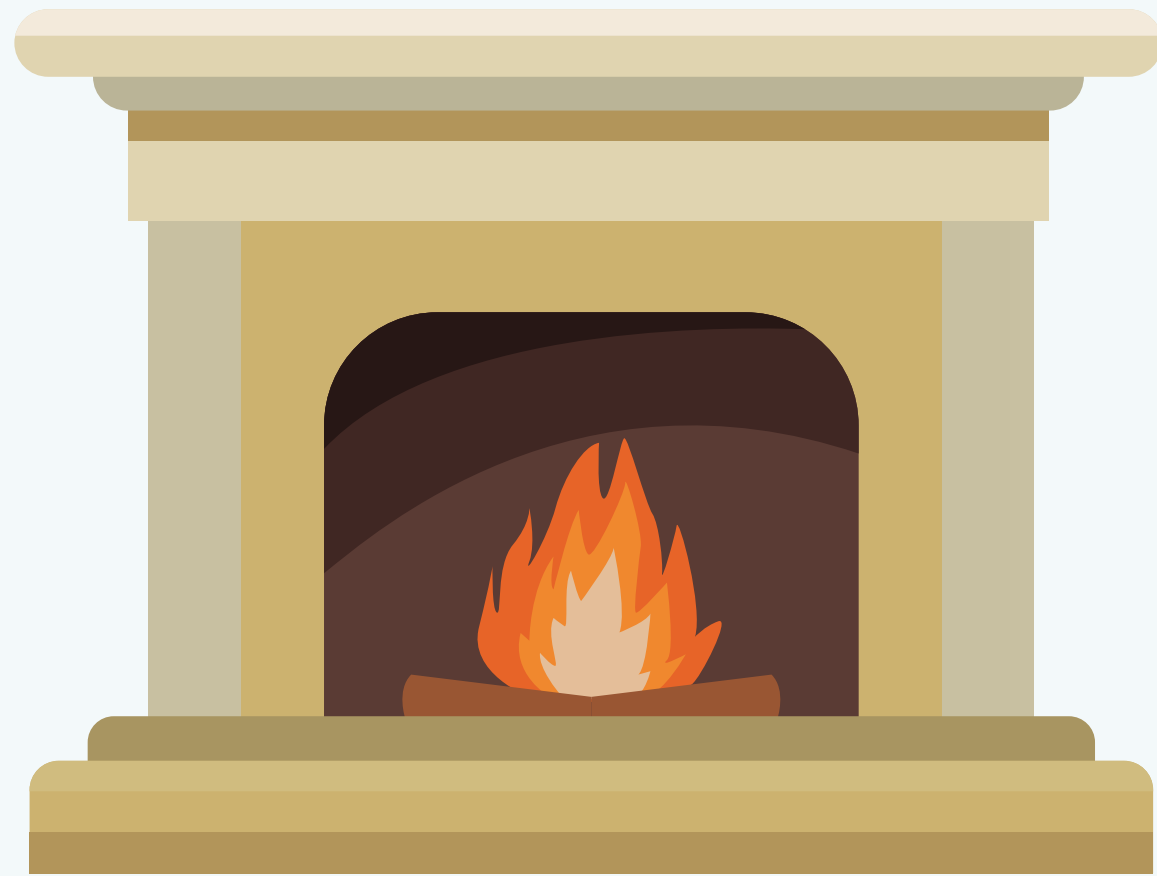
In s'ierru fait frius meda e, si niat,
podis fai su mustajoni de nì.

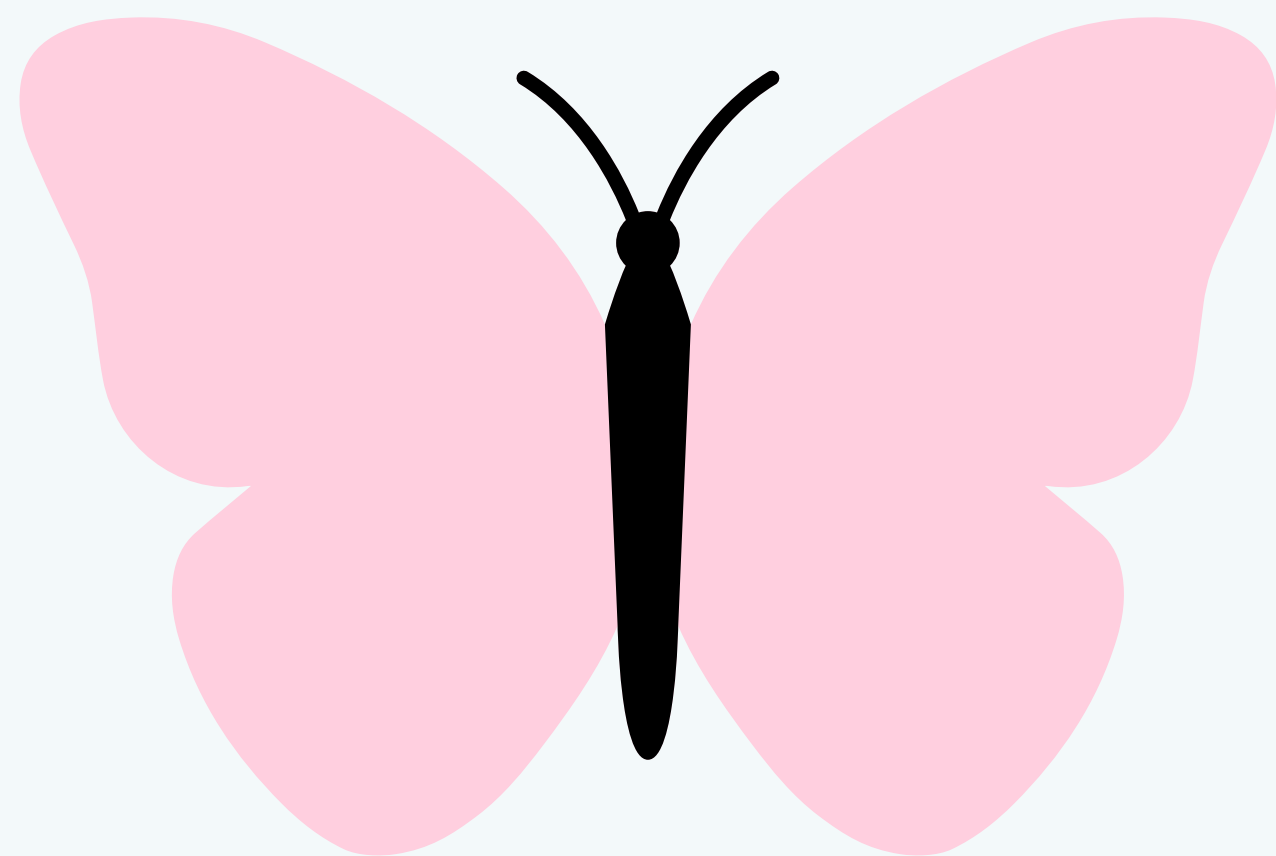


In s'ierru si podit bufai
una tassa bella de ciculati callenti.



In s'ierru est bellu a abarrai ananti de su fogu,
ligendi is contus de forredda.





BERANU

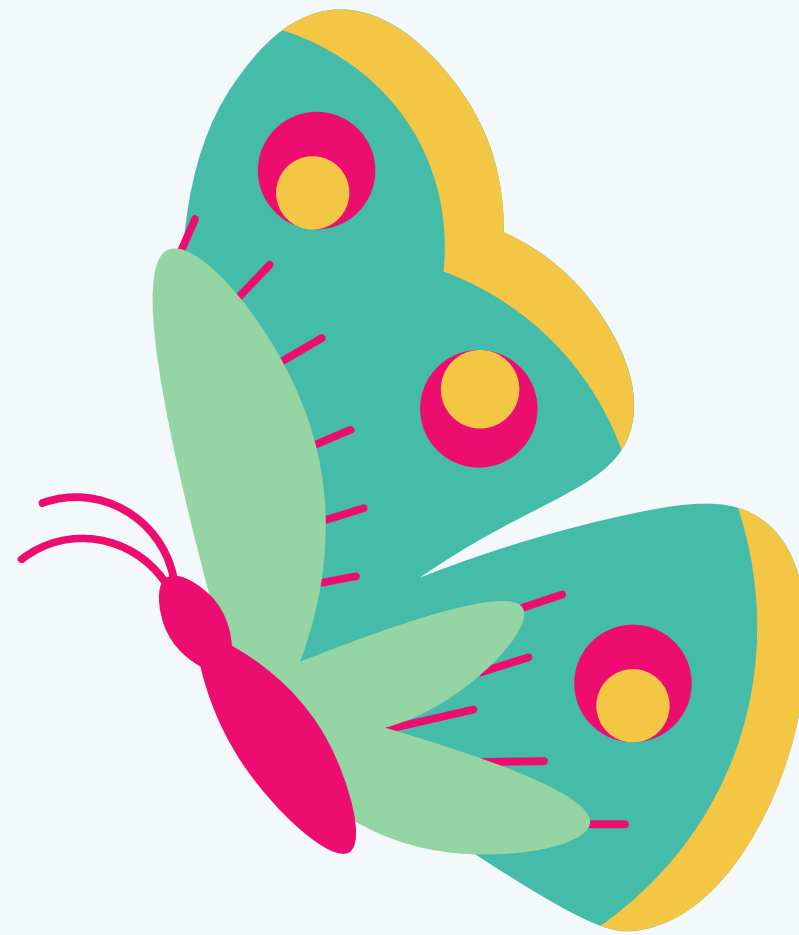
In beranu su soli est tèbidu e
inghitzant a nasci is froris.



In beranu si podint prantai matixeddas e froris.



In beranu podis biri bolai is mariposas.





...e imoi?
Chistionaus impari!
Cali stagioni si
praxit de prus?
e poita?



REGIONE AUTÓNOMA
DE SARDIGNA



COMUNU DE
ARBUS

PROGETU IMOI ETOTU