



ARRÈGULAS PO SCRIRI IN SARDU

S'ALFABETU

S'alfabetu sardu tenit 22 lìteras

A B C D E F G H I J L M
N O P R S T U V X Z

DONAI CURA:

In s'alfabetu sardu no teneus
mai:

Q W Y K

ABI



BABBU



CANI
CUMBIDU

CELU



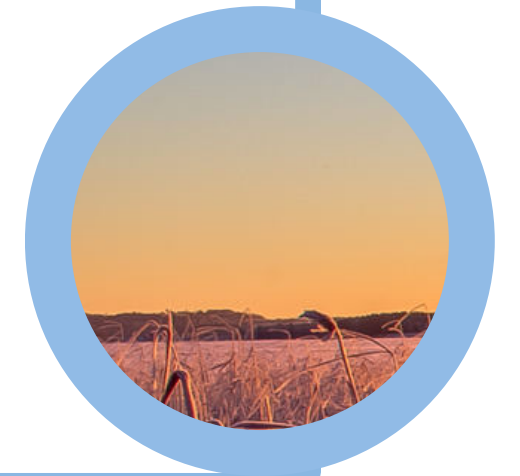
CENA



CÌXIRI

CHENA

CHITZI



DRUCI



ERBA



FOGU



GANA



GENUGU



GIOGU

GOMAI

GUNNEDDA



GHERRA

GHIÀCIU



H

**sèmpiri muda
e aintru de
fueddu
(mai a
cumentzu)
CHINI
CHENA**

IERRU



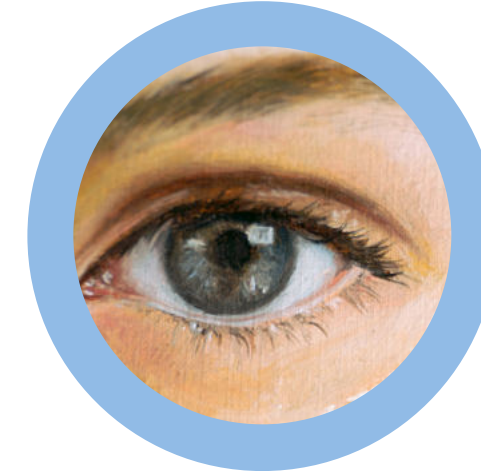
**AJAJU
MASSAJU
JANAS**

J

LANA



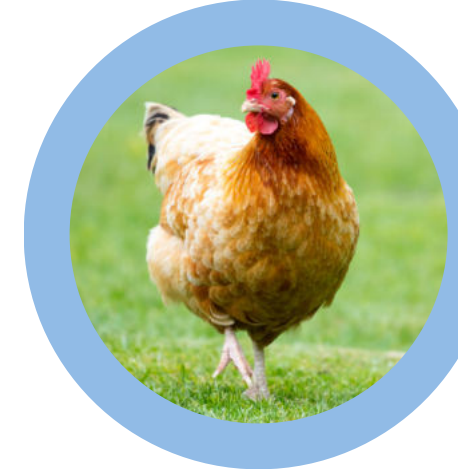
OGU



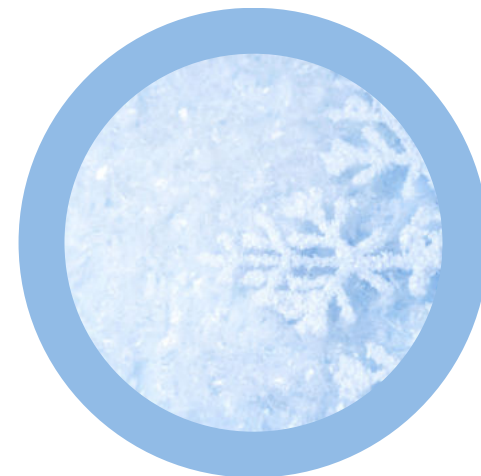
MANU



PUDDA



NI'



RICAMU



SALI



UTURONI

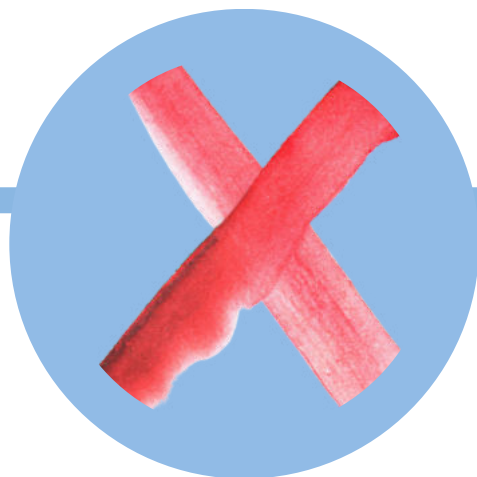


TRUNCU



VASU





scèscia

**sempri aintru de
fueddu**

NEXI

PAXI

CÌXIRI



ZIMINERA



TZÙCURU



REGIONE AUTÒNOMA DE SARDIGNA
REGIONE AUTONOMA DELLA SARDEGNA



COMUNU DE ARBUS



PROGETU IMOI ETOTU

PROGETU FINANTZIAU CUN SU DINAI DE SA REGIONE AUTÒNOMA DE SARDIGNA
CUNFORMA A SA L. 482/99 E A SA L.R. 22/2018